

Rugged Pre-Programmed Power Logger

OM-170PL Series



\$2550
Basic Unit



- ✓ Records and Displays Voltage, Current, Power, VARs, Power Factor, Phase Angle and More
- ✓ Easily Set Up for Wye or Delta Systems, Both 3 and 4 Wire or Single-Phase, Phase-to-Phase and Z Coil
- ✓ Built-In Phase Rotation Indicator
- ✓ Rugged Lockable, Non-Metallic Waterproof Case
- ✓ Input Cable Includes In-Line Fuse Protection and Clear Indication of Phase and Polarity
- ✓ Comprehensive Data Analysis Software Included
- ✓ Pre-Stored Configurations Make System Configuration Changes Fast and Easy

The OM-170PL power logger allows complete programming using a simple, straightforward two-key setup. New setups may be saved in non-volatile memory for recall at any time. Transportable program modules provide quick hands-free setup on-site without keystrokes. The recording mode, sample rate, and recording length, as well as other parameters, may be programmed. Password protection may be invoked to protect against unauthorized access.

The output port on the front panel allows direct communication with your computer via an optional OM-170-COM-502 serial interface module. This connection allows you to obtain hard copy of the data as it is recording, start and stop recordings, and transfer data via a modem from remote locations. Data may be transferred to a portable memory pack, leaving the unit on-site to continue recording. Alarm outputs are also available with the OM-170-COM-550 module.

Setup on-site is fast and easy. The input cable supplied is color-coded for both phase and polarity and is easily connected in seconds. A built-in phase rotation indicator ensures proper phase-to-phase connection before the recording is started.

Change the system configuration quickly and easily by selecting one of these pre-stored setups:

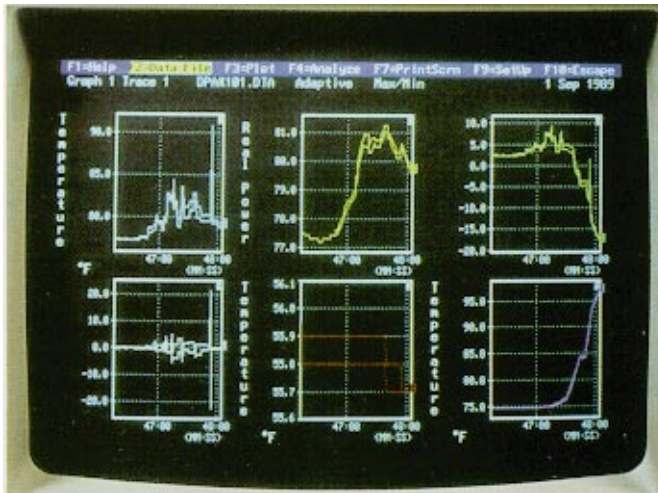
#1: 3 ϕ 3E: 3-phase, 3-element for use on 4-wire Wye systems.

#2: 3 ϕ 2E: 3-phase, 2-element used for 3-phase, 3-wire Delta or Wye installations where two elements will be used to measure voltage and current.

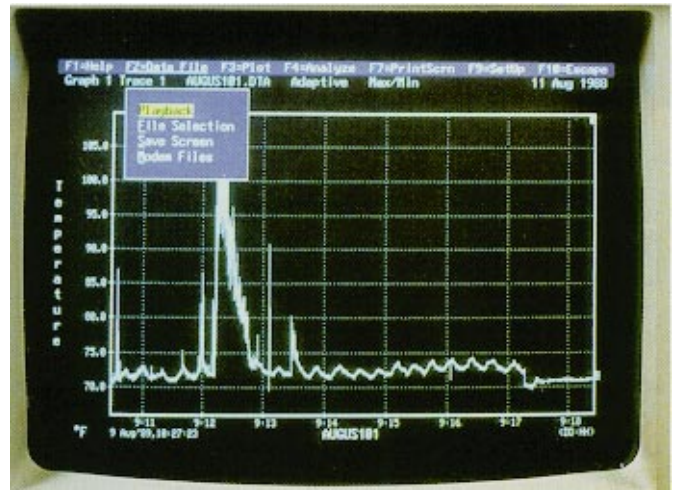
The new OM-170PL Series power logger is a rugged, dedicated datalogger pre-programmed for measuring ac parameters and packaged in a weatherproof case. Two basic models are available: one for use with current probes with a 1 Amp output and one for use with current probes and a 5 Amp output. Both units have three voltage input channels capable of measuring 0 to 600 Vac and three current input channels for use with current probes.

Math channels are set up for power measurements. Four pre-stored configurations are set for 4-wire Wye, 3-wire Delta, single-phase and voltage-only measurements. Any setup can be loaded quickly and easily from the front panel, or users may customize their own configurations.

The OM-170PL records parameters in its solid state memory for playback and analysis on your computer using the comprehensive analysis software included. The unit's LCD functions as a meter, providing a real-time update of all the measurements and operating parameters.



Pull-down windows group functions into logical, easy-to-implement choices. Simply select the function group and execute the desired choice.



The analyze window offers a comprehensive set of tools to expand your ability to review recorded data. Sections of the graph can be zoomed in size, text added, size and location of the graph changed, multiple graphs combined/overlaid, statistical analysis performed, and more.



SERIAL I/O



BMPC

#3: **2ø2E**: 2-phase, 2-element is used for measuring both lines to neutral in a split line residential installation.

#4: **3 volt**: 3 voltage inputs used for measuring voltage only on a single or 3-phase installation.

Specifications

Inputs	OM-170PL1	OM-170PL5
Ch. 1-3	POD-250 (0-600 Vac)	POD-253-(0-600 Vac)
Ch. 5-7	POD-250 (0-1 Aac)	POD-253-(0-5 Aac)

Max. Input Voltage: 750 Vac

Max. Input Current: OM-170PL1, 2 A (for 1 min); OM17-PL5, 10 A (for 1 min.)

Math Channels: Programmed per default setups

Record Mode: Preset to adaptive, programmable

Record Time: Preset to 72 hr, programmable to 999 days

System Accuracy: <0.25% (excluding current probes)

Resolution: Programmable to 0.1 V and 0.1 A

RAM Storage: 64K for basic models; 256K for -E models

Battery Operation: Up to 60 days between charges

Recharge Time: 32 hr from full discharge to full charge

Backup Battery: Holds data and configuration for 1 year min.

Clock Accuracy: 10 ppm (6 min/year worst case)

Operating Temp.: 14 to 140°F (-10 to +60°C)

Storage Temp.: -4 to 156°F (-20 to +70°C)

Relative Humidity: 5 to 95%, non-condensing

Shock and Vibration: Meets Mil Std. 810C, Method 514

Weather Tightness: Rain and splash proof

Case Material: High impact ABS/polycarbonate

Charger: Built-in autoranging off Channel 1 input



Dimensions: 7.5" H x 17.5" W x 11.6" D (190 x 445 x 295 mm), includes handle

Weight: 15 lbs (5.6 kg)

To Order (<i>Specify Model Number</i>)		
Model No.	Price	Description
OM-170PL1	\$2550	Power logger, 600 V 1A, 64K
OM-170PL1E	2940	Power logger, 600 V 1A, 256K
OM-170PL5	2550	Power logger, 600 V 5A, 64K
OM-170PL5E	2940	Power logger, 600 V 5A, 256K
OM-170PLL	2580	Power logger, 600 V Low amp., 64K
OM-170PLLE	2940	Power logger, 600 V Low amp., 256K

The OM170-PL Series power loggers are packaged in a weatherproof case and include voltage and current input modules, autoranging charger unit, 9' (2.7 m) input cable assembly, applications software and complete operator's manual.

Ordering Example: OM-170PL1E power logger, 600 V/1A, 256K memory, computer interface, \$2940 + 3(245) = **\$3185**.

Note: communications module ordered separately.

Note: Current transformers/probes must be ordered separately. The OM-170PL1 and OM-170PL5 use any industry CT. However, the recommended probe is the OM-170-RR2-207 (\$245), which has 1000:1 ratio, reading range of 0-1000 Amp and phase error of less than 1.5°. The OM-170PLL power logger can use the OM-170-RR2-209 (\$195) (or OM-170-RR2-208, \$245), which is designed for low power (i.e., <10A) readings.